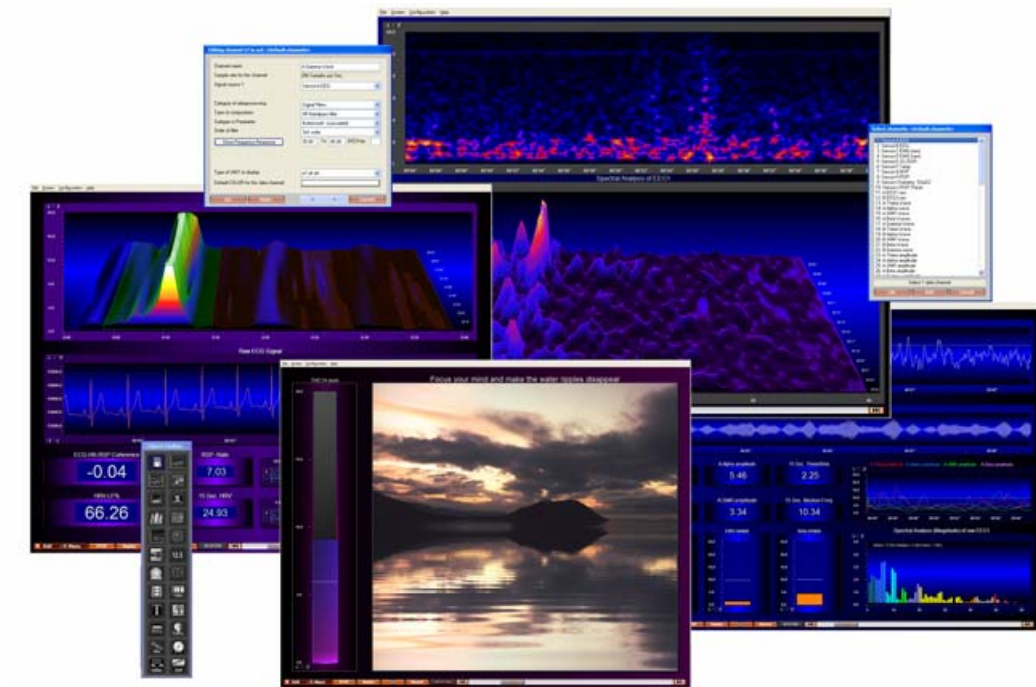


# How to update your BioTrace+ Software...



BioTrace+ is a product of Mind Media B.V  
© 2004-2008 in the Netherlands.  
For more information: [WWW.MINDMEDIA.INFO](http://WWW.MINDMEDIA.INFO)

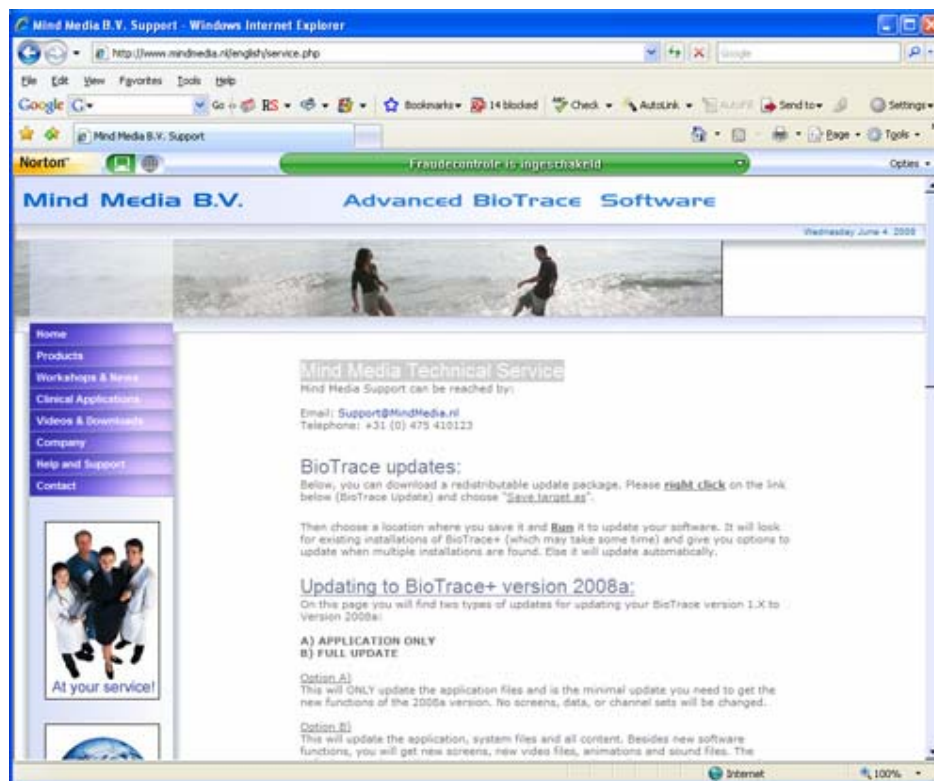
## Updating BioTrace in 6 steps:

This document lists the steps you should take to update your BioTrace+ Software to a newer version. You will need a (reasonably fast) internet connection. It requires you to download an update application to your computer and run that application. You can also download this update file to a (USB) memory stick from another computer and transport and run it on your BioTrace computer that way.

### Step 1: open the service webpage

Start your internet browser and open our website [www.mindmedia.nl](http://www.mindmedia.nl)

Go to the service webpage (<http://www.mindmedia.nl/english/service.php>) by clicking on the ‘**At Your Service**’ image or through the **Help and Support** option in the menu on the left.



**Please note:** actual screen display may vary as our webpages will be updated and new software updates will be published in time.

## Step 2: choose option type A or B

Choose which **Update Option** you want and for which device (NeXus-4, NeXus-10, etc).

**Option A)** This will ONLY update the application files and is the minimal update you need to get the new functions of the new BioTrace version. No screens, data, or channel sets will be changed. The 'BioTraceWhatsNew.pdf' is also included. The size of this file is typically less than 10 MB.

**Option B)** This will update the application, system files and all content. Besides new software functions, you will get new screens, new video files, animations and sound files. The default channel set will be update too. Be sure to check out the sensor demo protocols.

Please note that both update options A and B WILL NOT CHANGE ANY SESSION or CLIENT data. These updates are now available for NeXus-4 and NeXus-10. NeXus-16 and NeXus-32 will be published asap. We advise to ALSO update your flash player software. Please take a look at the additional update files below.

## Step 3: choose device and language

a) Choose which **NeXus (Device)** you are using. Please note that you can not update your NeXus-10 with NeXus-4 files or vice versa.

b) Then choose which **language** you are updating, if a language is indicated. English is the universal language, but other languages (like German) will also be made available.

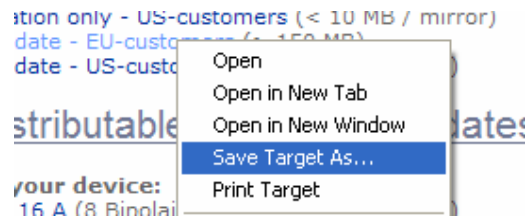
## Step 4: choose EU or US server

When you are located in the EU or Asia, we advise to use the EU server. For people in the Americas, we advise to use the US servers. In the example below the full update for the english NeXus-10 version has been selected.

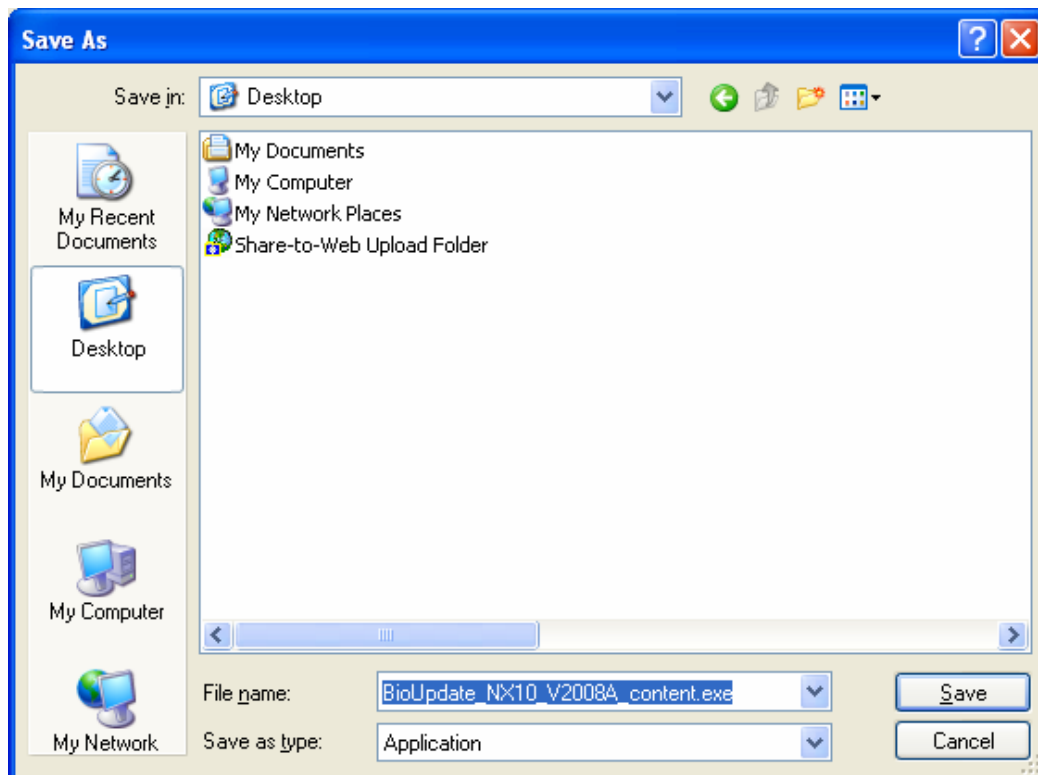


## Step 5: download the update files

Right-click with your mouse on the update that applies to your NeXus system, language and location and choose “**Save Target As...**”



Then choose a location on your computer where you want to save (download) this file. Make sure you can find this location, after you downloaded the file. A good location would be your **desktop** (shown) or the “**My Documents**” location.

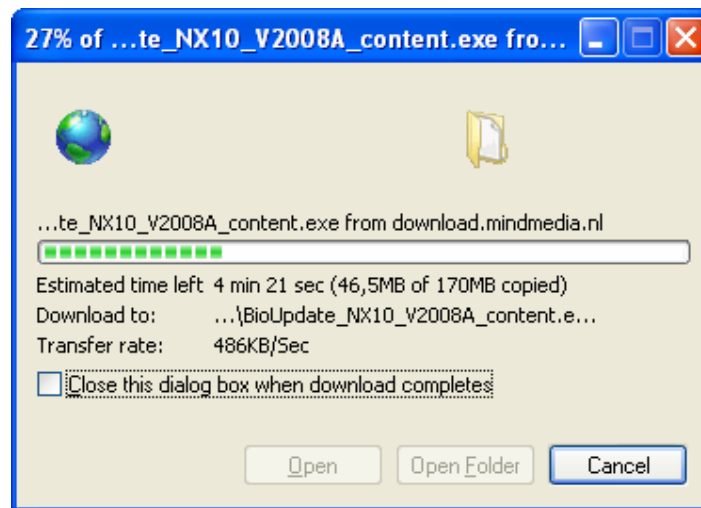


*Note: screen display may vary and depends on which file you are downloading.*

After you have pressed the SAVE button, the file will be downloading.

**Note:** you can also download this file to a memory stick by using another computer (which is connected to the internet) and then run it from this stick on your BioTrace+ computer.

Downloading the full contents files may take a long time, depending on the speed of your internet connection. A typical range is from 5 to 30 minutes.



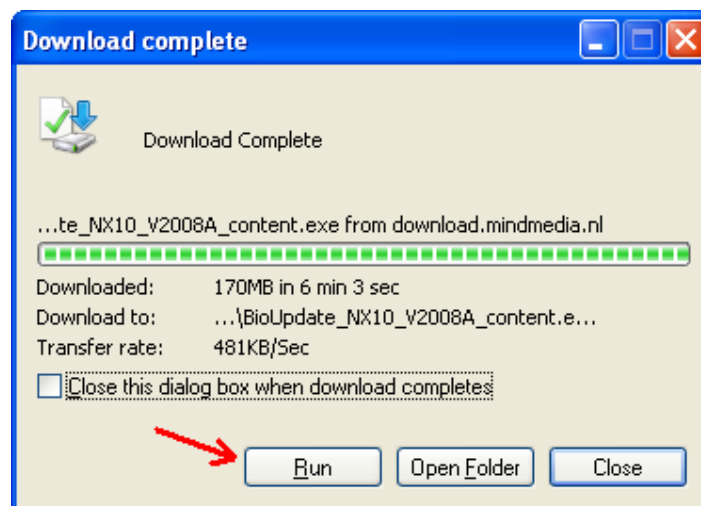
After download is complete, you can choose to ‘**Open or Run**’ the application.

## **Step 6: open (run) the update application**

After the update executable has been fully downloaded, you can **Run** it through dialogbox shown above. If the file has been downloaded correctly, the dialogbox below will be shown. If a download error has occurred or the file is corrupted, this would generate an error message such as ‘Invalid Win 32 application’.

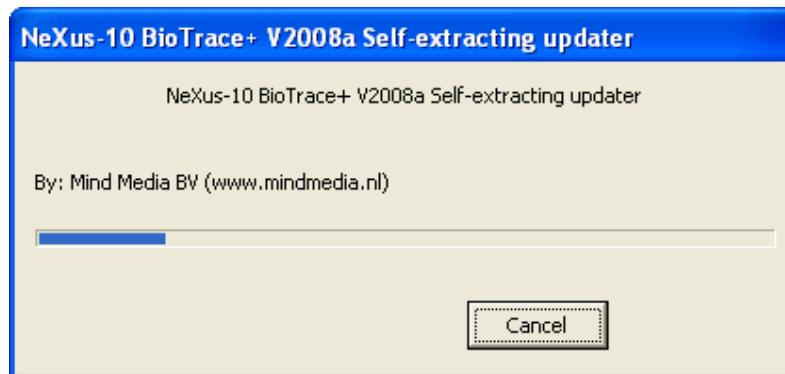
In that case please try again to download this file, or use another computer to download it, possibly on another location. You can copy the downloaded update application to a (USB) memory stick and transport it to you BioTrace computer that way.

**Note:** make sure the **BioTrace+ application is closed**, before you update it!

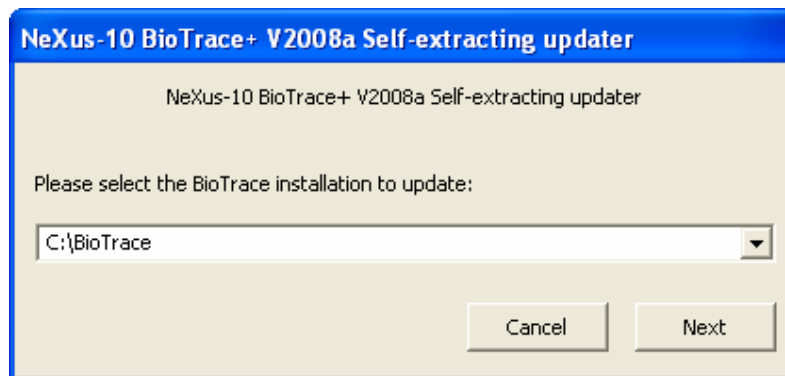


*Click on the Run button...*

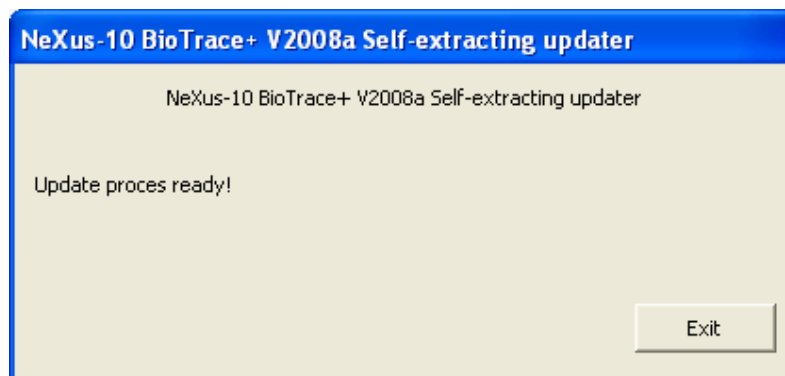
If windows generates a security warning (Publisher could not be verified) you can confirm now, and click **Run** again.



After that the Biotracer self-extracting updater software will start and scan you computer for a BioTrace installation for the type of NeXus you selected. So if you have BioTrace+ for NeXus-10 installed and downloaded the NeXus-10 update, it should find that installation. If multiple installations are found, the software will ask you to select the directory from a listbox.



If only one (valid) BioTrace+ installation is found, it will not ask you this, and will update this directory automatically.



After this, you can start up BioTrace+ and it will show up with the latest version, that you just downloaded.

## Update; known issues:

### Updating NeXus-4: can't find a valid installation

If the nexus-4 updater software can not find a valid installation of NeXus-4, it may be that a system configuration file needs to be updated first. Please download the following file:

<http://81.169.139.131/download/NX4/system.configuration>

Close BioTrace, copy this file to the `\BioTrace4\System` directory (and overwrite the existing file). Then run the update. It should now find the NeXus-4 Biotrace software.

### Texts and Dialogboxes are empty after update

The first (Beta) versions of the 2008a update contained language files (DLLs) that could not be opened on some Windows XP and Vista computers. They have been updated. By just downloading the '**application only**' update and run it once, this will be corrected. This is only required for the early update 2008a files, not for later versions or updates of Biotrace.

You can also download these DLLs directly and place them in the `\BioTrace\System\Language` folder manually which will have the same effect.

Download link is here:

<http://81.169.139.131/download/NX4/biotrace-v2008a-new-language-dlls.zip>

Required for BioTrace 2008a only!

### BioTrace online update function

As many computer running BioTrace+ are not connected to the internet (due to security reasons) we decided to drop the online update function of BioTrace as it was implemented in the 1.X version. This option is no longer available.

Please use the suggested method of updating Biotrace+ as mentioned in the update steps in this document, instead.

<end of document>