

NeXus-10

Your **LINK** to the wireless future of Physiological Monitoring and Biofeedback!

BlueTooth WIRELESS

technology offering a real time connection to your PC.

Records up to 24 hours on **FLASH** memory



Mind Media BV introduced the NeXus-10 in 2004. The Nexus-10 is a portable 10 channel Physiological Monitoring and Feedback platform that utilizes BlueTooth Wireless Communication and Flash Memory Technologies. NeXus-10 offers data acquisition at up to 2048 samples per second. The advanced technology preamps enjoy independent 24 bit A-D convertors per channel with DC coupled amplifiers, allowing for signals from 0 to 800Hz including raw EEG, ECG, EMG, EOG, true DC and Slow Cortical Potentials. Because this system uses carbon coated cables with active shielding, movement artifact and noise levels are very low by design!

Specifications:

4 FAST EXG channels	2048 Samples/sec	24 bit ADC output	DC-800 Hz
4 AUX channels	128 Samples/sec	24 bit ADC output	DC-50 Hz
2 Digital channels	128 Samples/sec	Digital precision	N/A

A wide range of additional sensors is available:

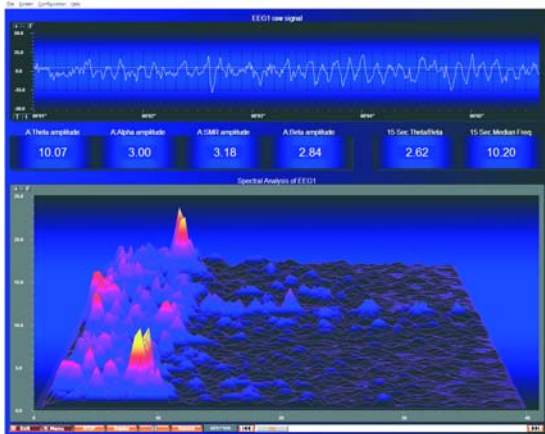
Sensors: EEG, EMG, ECG, EOG and SCP. (slow cortical potentials)
Sensors: RSP, BVP, SC/EDR, Temperature, Force, HEG. (ETCO2 under prep.)
Sensors: Nonin SpO2 Oximetry, Trigger (1024SPS) & EVENT synchronization

BVP finger sensor Article: NX-BVP-1A			2 channel EMG/EKG sensor cable Article: NX-EXG2-2A
RSP sensor (respiration) Article: NX-RSP-1A			EMG/EKG reference cable Article: NX-REF1-SNP
Temperatur sensor (skin) Article: NX-TMP-1A			2 Channel EEG sensor cable Article: NX-EEG2-2B
SC/GSR sensor (incl. "fingerclips") Article: NX-GSR-1A			EEG or SCP reference cable Article: NX-REF1A-SNP/NX-REF1A-RNG
Oximetry sensor (Nonin) Article: NX-SPO2			2 Channel SCP sensor cable Article: NX-SCP-1A

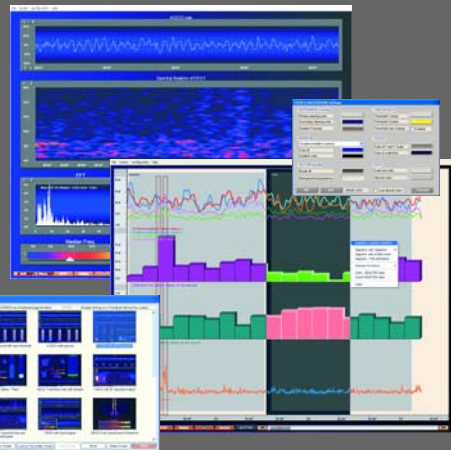
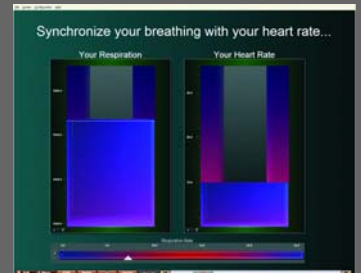
BioTrace+ Software

Optimal software support for the NeXus-10 Physiological Platform.

Runs on your PC with Microsoft Windows XP or Vista



Dual monitor support!



Our new BioTrace+ Software provides **new dimensions** of flexibility and elegance in physiological monitoring and biofeedback capabilities. It offers the optimal support for our wireless **Nexus-10** platform with its 24 bit ADC resolution, high sample rates and flash memory. Special support for slow cortical potentials, HEG and SpO2 modalities.

Short Summary of Key Features:

- * Easy to learn intuitive point and click interface.
- * Fast and responsive virtual instruments with smooth Direct-X accelerated graphics. New instruments: Spectrogram, 3D Spectral Arrays, Water ripple instrument and multi-linegraphs. Improved session review and analysis mode.
- * Switch on the fly between 1 to 12 active screens, instantly change feedback parameters and digital filter settings. True dual monitor support. (for master and client screens)
- * Easy client and session database, trend reporting functionality. Data export functions. HRV displays, HRV analysis and reporting.
- * Integrated, fully functional protocol and screen building editor: build your own screens and protocols with a few mouse clicks.
- * State of the art Multimedia Biofeedback with Direct-X graphics, 3D audio and DVD video. Real-time video and audio capture Biofeedback/Neurofeedback computer games included.
- * 80 virtual data channels in software with 64 bit floating point precision. Extensive library of data processing, digital filtering and statistical & mathematical functions. Channel sets can be edited and saved freely. Artifact rejection functions.

NeXus-10 uses BioTrace+ Software. Contact us for more information on applications, pricing & training.
Mind Media B.V. Netherlands WWW.MINDMEDIA.INFO (sales@mindmedia.nl) Tel: +31-475-410123